

DISPLAY UNIT

PCU-8D DISPLAY MODULE



The PCU-8D is a lightweight driver display module designed for general motorsport applications. It is designed to connect to a host ECU via CAN and present the driver with information on a 4.3" display and LED lamps. The display is suitable for use in direct sunlight and at night. The text and graphics layout of the screen is user-configurable via PC software. 100 pages are available, and are selectable by CAN message.

<p>Application</p> <ul style="list-style-type: none"> Data display and warning lamps Typically installed within the steering wheel, although can also be remotely mounted <p>Electrical</p> <ul style="list-style-type: none"> Supply voltage 8V to 16V DC Supply current: <0.6A @ 13.8V (screen and all LEDs on) <p>Electro Magnetic Compatibility</p> <ul style="list-style-type: none"> Complies with the essential protection requirements of 2004/108/EEC <p>Communications</p> <ul style="list-style-type: none"> 1 CAN interface (1Mbps). No internal termination 1 USB interface for configuration only <p>Unit Inputs</p> <ul style="list-style-type: none"> 1 reset input (active low with internal pull-up; can be left unconnected if not required) 1 CAN address selection analogue input (connect an external resistor to unit supply ground) <p>Other Features</p> <ul style="list-style-type: none"> Configuration software tool supplied with the unit 	<p>Environmental</p> <ul style="list-style-type: none"> Size: 130mm x 81mm x 22mm Weight: <230g Splash resistant to standard motorsport fluids Lid has a rubber seal, case fixings are sealed with silicone sealant Maximum humidity: 95% non-condensing Operating temperature: 0°C to +50°C Storage temperature: -25°C to +85°C Vibration: 100Hz to 1000Hz, all axes, 24 hours Vibration isolation is recommended <p>Display</p> <ul style="list-style-type: none"> 4.3" backlit LCD display Viewable area 95mm x 54mm, 480 x 272 pixel resolution Viewable in direct sunlight. Brightness adjustable via CAN message for low-light conditions 16 Gauge types for displaying data, including bar tacho, rev lights and variable text 100 user-configurable page, selectable by CAN message The display is fully customisable; page layout can be configured by PC with text and gauges Alarm pages or user-configurable text warnings can be triggered by CAN messages
--	--

DISPLAY UNIT

PCU-8D DISPLAY MODULE

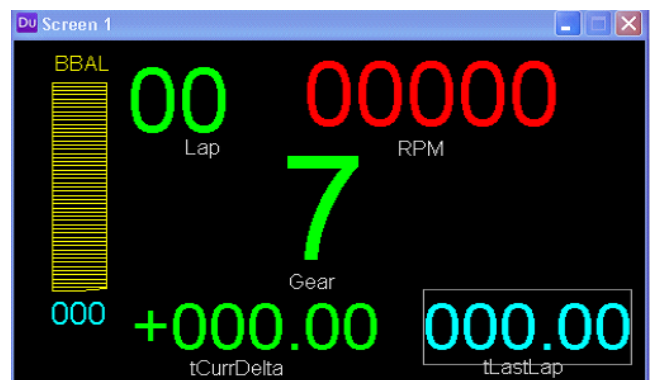
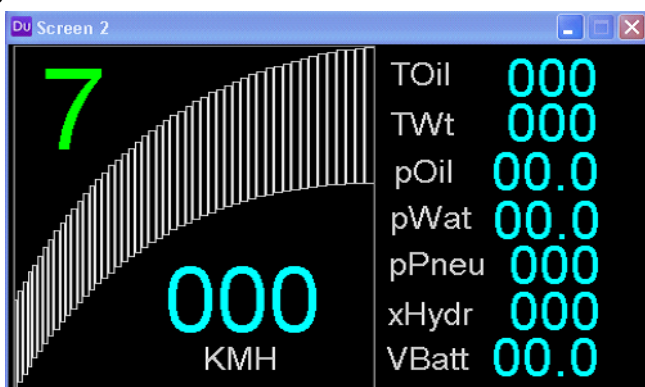
Connection Definition

- Un-terminated flying lead only (no connector fitted), length 1m
- 26AWG wire for all wires unless stated
- USB wires are contained within a cable screen, with the other wires coiled round the USB screened cables
- Note the unit supply is required when configuring. The unit cannot be powered by USB
- Wire colours:

Orange		Unit Supply Positive
Brown		Unit Supply Ground
White		CAN +
Blue		CAN -
Green	(28AWG)	USB +
White	(28AWG)	USB -
Red	(24AWG)	USB 5V
Black		USB Ground
(Drain)	(28AWG)	USB Screen (internally connected to supply ground)
Grey		CAN address selection input
Yellow		Reset input

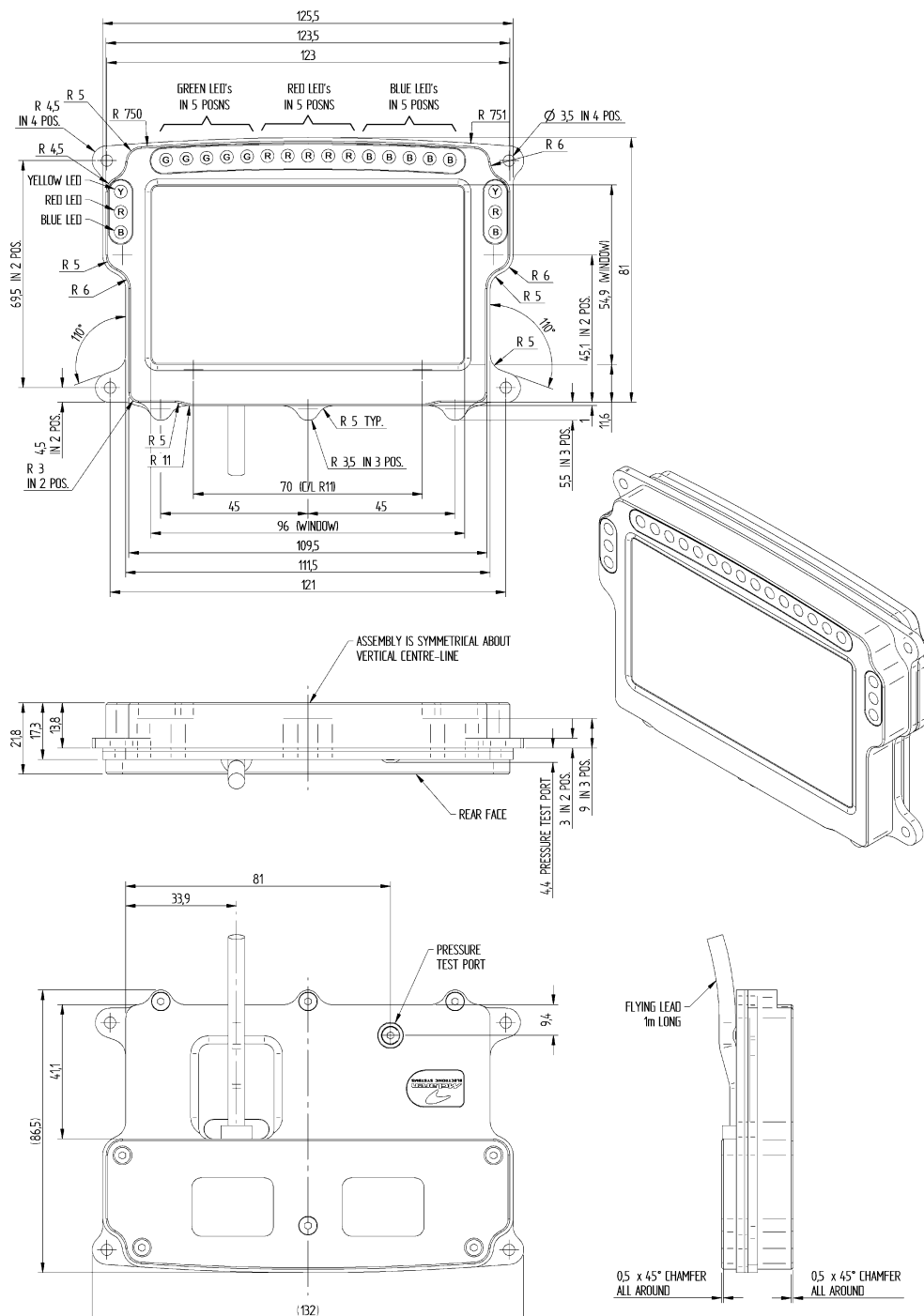
Example Screen Layouts

- The configuration software allows each page layout to be fully customised



DISPLAY UNIT

PCU-8D DISPLAY MODULE



Description
Panel Display Unit PCU-8D

Order Code
O 030 020 011 002

30/12/15

McLAREN TECHNOLOGY CENTRE
CHERTSEY ROAD, WOKING
SURREY, GU21 4YH, UK

T: +44 (0) 1483 261400
F: +44 (0) 1483 261402

sales@mcclaren.com
www.mcclaren.com/mat

T: +1 (704) 660 3181
F: +1 (704) 660 8829

SUITE 115, BOSTICK BUILDING
9801 WEST KINCEY AVENUE
HUNTERVILLE, NC 28078, USA